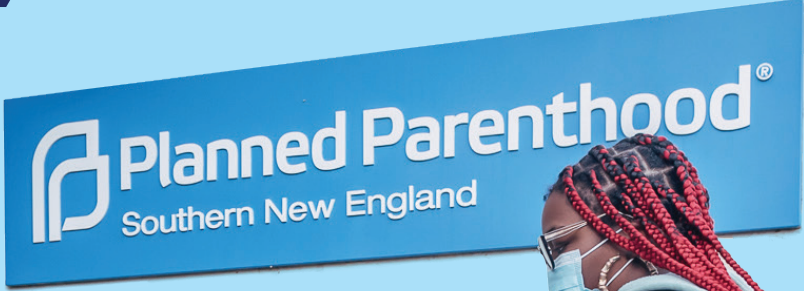


HERE FOR GOOD HERE FOR
D HERE FOR GOOD
HERE FOR GOOD
OR GOOD HERE FOR GO
E FOR GOOD HERE FOR



HERE FOR
FOR GO
GOOD
HERE FO
HER



Annual Report 2022

CHARTING OUR PATH FOR THE FUTURE



Our mission and vision are centered on equity and access

Preparing this year's annual report was truly bittersweet. Looking back over our last fiscal year (July 1, 2021 - June 30, 2022), which ended with the Supreme Court overturning *Roe v. Wade*, we are more committed than ever to our vision of a just future where everyone who wants an abortion can access one. **With your partnership, we are determined to help build a sexual and reproductive health and rights movement that centers health equity and allows all people to control their own bodies, lives, and futures** – no matter their income, race, or ZIP code.

Recognizing that dramatic changes were likely on the horizon, our Board of Directors engaged in a strategic planning process in 2021 to clarify our vision and chart our course through a turbulent future. This highly

collaborative effort involved the input of dozens of PPSNE staff, along with patients, young people, supporters, community partners, and health care leaders. We listened deeply to understand what was most important for us to focus on to fulfill our mission and realize our vision.

The result is a bold plan that holds health equity as our north star. Over the next several years, **we will enact strategies to identify and reduce persistent health care disparities in our communities, while raising the bar on patient experience and quality of care for all of the people we serve.** We will work to shift the public dialogue around abortion by dismantling the shame and stigma that often clouds the conversation. We will make it clear that PPSNE is an essential part of the public health

infrastructure in our two states and expand the care we provide to meet the changing needs of our communities. To achieve our goals, we will develop our workforce and enhance our financial sustainability so that we can continue to deliver on our mission during these uncertain times.

This new strategic plan took effect on January 1, 2022 and we were ready to dive right in. **Despite incredible challenges, with your support we are creating a path towards a more just and equitable future.**

We are proud and humbled to share these Fiscal Year 2022 highlights with you to underscore the impact of the critical work we are able to do because of your support. You make it possible for us to live up to the promise we make to provide care, no matter what, and to make that care more accessible to everyone who needs it. **Thank you for being a dedicated partner with us in this movement.** Together, we'll keep fighting with all we've got to make true reproductive health and rights a reality for all.

With deep gratitude and immense appreciation,

Amanda Skinner, MSN, MBA
she/her/hers
PPSNE President & CEO

Dr. John Morton
he/him/his
PPSNE Board Chair



Amanda Skinner, MSN, MBA
PPSNE President & CEO



Dr. John Morton
PPSNE
Board Chair



THE COURT FAILED US, BUT WE WON'T BACK DOWN



The past two years have been devastating for abortion and reproductive rights. In September 2021 a bill known as S.B. 8, one of the most dangerous and extreme abortion bans ever, went into effect in Texas. Its harmful impacts foreshadowed what was soon to follow across the country. On June 24, 2022 - as the fiscal year that this report reflects was coming to a close - the U.S. Supreme Court upheld a 15-week Mississippi abortion ban in its ruling in *Dobbs v. Jackson Women's Health Organization* and cast aside almost fifty years of legal precedent when it overturned the protections of *Roe v. Wade*.

We were devastated, but not surprised, that the Supreme Court had eliminated the federal constitutional right to abortion. This decision revoked our right to control our bodies, lives, and futures and opened the floodgates for states nationwide to completely ban abortion.

People across the country looked to Planned Parenthood in the face of these egregious decisions, and we responded clearly: the court failed us, but we won't back down.



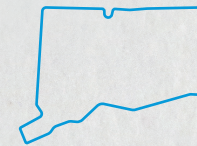
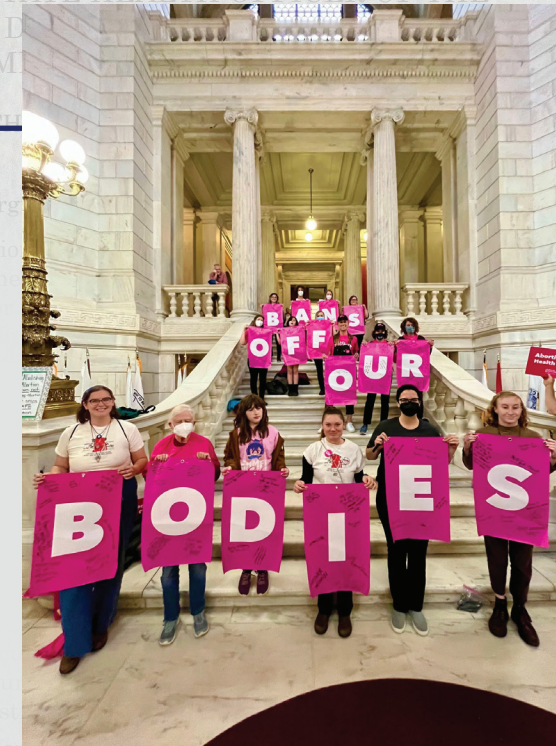
Your support allowed us to make significant strides in Connecticut and Rhode Island to ensure all residents can access the comprehensive health care they need and deserve, including abortion care.



ACTION FOR ABORTION ACCESS

The legal right to abortion is meaningless without access to care. Even as abortion remains legal in Connecticut and Rhode Island, systemic barriers continue to prevent people across our two states from accessing timely, high-quality abortion care.

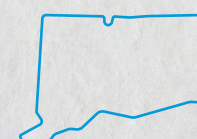
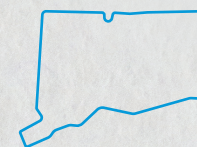
During the 2022 legislative session, abortion access was at the forefront.



CT Governor Ned Lamont signs the Reproductive Freedom Defense Act into law in May 2022.



The Reproductive Freedom Defense Act (RFDA) was signed into law. **In Connecticut, this historic bill is the most significant abortion rights legislation in a generation.** The RFDA removed outdated and medically unnecessary regulations and brought Connecticut law in line with modern medical standards of care. Thanks to the RFDA, trained advanced practice clinicians can now perform aspiration abortion care. This new law is a critical win at a time when we are facing increasing need for care and a serious shortage of abortion providers.





Abortion bans aren't just happening in other states. Currently, nearly 1 in 3 Rhode Island residents (over 330,000 people) cannot use their insurance to cover abortion care due to restrictions in RI law. This year, PPSNE continued the fight to pass the Equality in Abortion Coverage Act (EACA). The EACA would add abortion coverage to the state's Medicaid program and eliminate restrictions that prevent state employees from using their insurance to access abortion care.

“

Access to abortion shouldn't depend on where you work, how much money you make, or your type of insurance coverage. Everyone deserves access to care without barriers.

”

—Gretchen Raffa, Vice President, Public Policy, Advocacy, and Organizing, Planned Parenthood of Southern New England



BUILDING A MORE EQUITABLE FUTURE

For health equity to be a reality, we must address financial barriers that prevent people from getting the care they need - making care more affordable makes care more accessible for all people.

CONNECTICUT

After years of advocacy, the state passed a budget with new investments in family planning providers and Planned Parenthood health centers to keep sexual and reproductive health care services accessible in our communities.

RHODE ISLAND

Alongside partners and allies, PPSNE successfully advocated for the passage of a bill in Rhode Island that extends Medicaid coverage post-partum for up to one year! Previously, this coverage was only available for 60 days post-partum.

CT Governor Ned Lamont and CT Representatives Jillian Gilchrest and Matt Blumenthal visit tThe Judy Tabar Health Center in Hartford's North End.



PREPARING FOR A POST-ROE WORLD

In preparation for a post-Roe reality, our team began identifying new ways to reduce abortion access barriers and connect patients across Connecticut, Rhode Island, and beyond to providers, funding, transportation, and lodging to access the care they need.

The passage of Connecticut's Reproductive Freedom Defense Act was a leap forward for abortion rights and access. To meet the potential increase in demand for abortion care, PPSNE began preparing to train advanced practice clinicians (APCs) like Physician Assistants (PA), Advanced Practice Registered Nurses (APRN), and Certified-Nurse Midwives (CNM), to perform aspiration abortions.

The chaos of constantly changing abortion bans and other restrictions in states across the country has dramatically increased the complexity of accessing care. In response, we planned and budgeted for a dedicated Abortion Navigator to join our team in Fiscal Year 2023. This new role is designed to guide our patients through the process of seeking abortion care by providing them with the information, care, and services they require.



Proud abortion provider Colleen, APRN

“

Simply put: Abortion care is health care. Like all aspects of health care, abortion should be accessible without political interference and delivered with respect.

”

—Colleen, APRN

OUR PROVIDERS ARE ON THE FRONT LINES OF THE FIGHT FOR REPRODUCTIVE RIGHTS.



Dr. Nancy Stanwood training a clinician using a papaya as a simulation model.

ACCESS MAINTAINED ACCESS MAINTAINED ACCESS MAINTAINED ACCESS MAINTAINED ACCESS MAINTAINED

At Planned Parenthood, we're here for patients - whether they are addressing their routine health care needs today, planning for the future, or navigating the unexpected.

Your support makes it possible for us to prioritize maintaining and expanding access to care and services despite the challenges we face in our environment and the ongoing impacts of the pandemic on health care providers.

PPSNE STRATEGIC PLAN 2022-2025 | PRIORITY AREAS & GOALS



WHAT IS ABORTION STIGMA?

Abortion stigma is the belief that abortion is morally wrong and/or socially unacceptable. Abortion stigma causes shame and keeps us from telling our stories. This silence feeds anti-abortion attacks and destructive myths. Sharing our stories and talking about abortion helps us address stigma in our communities and in our culture - and even within ourselves.

HOW DOES IT CREATE IMPACT?

- Perpetuates negative stereotypes about who has abortions and why they have them
- Breeds silence about the truth - that abortion is a common and safe health care procedure
- Fuels the spread of misinformation that can be used to advocate for restrictive laws and policies



ABORTION BY TYPE

Planned Parenthood®



MEDICATION ABORTION/ABORTION BY PILL
8,588 PROCEDURES



IN CENTER ABORTION (ICA)
3,823 PROCEDURES



12,411
TOTAL ABORTIONS



HEALTH EQUITY IS OUR NORTH STAR:

This year we began working to achieve the goals of our new strategic plan, which centers health equity across our operations. With your support, we were able to make critical investments in staffing and resources that will increase our ability to ensure that sexual and reproductive health care is equitable and accessible to all.

Delivering high-quality, accessible care means meeting patients where they are—treating them as their whole selves by providing care in the most inclusive way possible.



This past fiscal year, we continued to provide ongoing staff training to increase the ability of all staff to work effectively across difference, focusing on topics such as micro-aggressions and using gender-inclusive language.



Dr. Nancy L. Stanwood
Chief Medical Officer

DR. NANCY L. STANWOOD BECOMES PPSNE'S INAUGURAL CHIEF MEDICAL OFFICER

In June 2022, we welcomed Dr. Nancy L. Stanwood as PPSNE's inaugural full-time Chief Medical Officer! Dr. Stanwood is a board-certified obstetrician-gynecologist with over 20 years of experience in clinical practice, medical education, and reproductive health and rights advocacy—with a long-standing relationship with Planned Parenthood.

Dr. Stanwood leads, oversees, and participates in PPSNE's clinical services, ensuring high-quality, safe, and patient-centered health care across 15 health centers in Connecticut and Rhode Island. She shares that, "With the erosion of almost 50 years of legal protection for reproductive rights and with growing health disparities due to systemic racism, I am committing myself fully to the mission and work of Planned Parenthood of Southern New England. All people deserve access to the care they need to live their lives with dignity and to thrive."

OTHER SERVICES



PREGNANCY TESTS
27,251



EMERGENCY CONTRACEPTION
3,937



PREP & PEP
152



GENDER AFFIRMING HEALTH CARE VISITS
1,655



HPV TESTING (NOT TREATMENT)
7,460



CLINICAL BREAST EXAMS
6,991

CANCER SCREENING

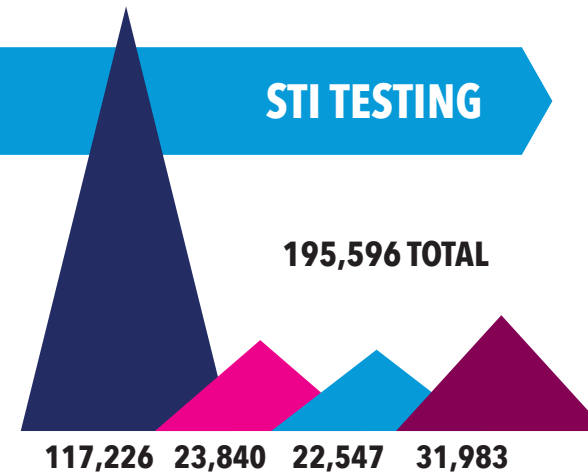


PAP TESTS
6,150



COLPOSCOPY/LEEP
613

STI TESTING



Chlamydia & Gonorrhea

HIV

Syphilis

Other STI*

*Herpes, Trichomonas

2x

In the past two years, the number of visits for gender affirming hormone therapy has doubled.

As the number of patients turning to PPSNE for gender affirming hormone therapy (GAHT) rose rapidly, we met the call. This year, we expanded access to GAHT through telehealth, making our care more patient-centered and improving their experience of care!



95%

of patients have positive attitudes and beliefs towards PPSNE

PPSNE Market Research survey, Fall 2021

FOCUSING ON CONNECTION

The Covid-19 pandemic has disrupted so many aspects of all our lives. Its impact on young people has been especially intense, as they have faced significant interruptions in their education, less ability to interact with their peers, and for many, an increasing financial strain on their families.

After a year of mostly virtual engagement, our Education & Training team was eager to return to in-person programming with young people across Connecticut and Rhode Island. As school districts grappled with shrinking resources and staff shortages, our educators helped to fill the gap in health education at many schools in Connecticut and Rhode Island.

100% of our programming in FY21 was virtual.

65% of our FY22 programming was in-person.



Our STARS (Students Teaching about Responsible Sexuality) peer educators also came back together in person and ready to reconnect with their peers! This year we refined and standardized the STARS curriculum to better meet the goals of the program, while also providing flexible engagement for participants and their peers. STARS groups in both Connecticut and Rhode Island led monthly Teen Night workshops on topics regarding health, mental health, sexuality, and more.

At PPSNE we envision a just society where sexual and reproductive rights are basic human rights, where health care is equitable and accessible to all, and where each person lives their healthiest life.

In September 2021, the Texas abortion ban known as S.B. 8 went into effect. People from across the region showed up and showed out to support the broader fight for abortion access.

In Connecticut and Rhode Island, hundreds turned out for the National Rally for Abortion Justice on October 2 to loudly declare: Bans Off Our Bodies! We won't go back - and we won't allow people across the country to be denied the right to fundamental abortion care without a fight.



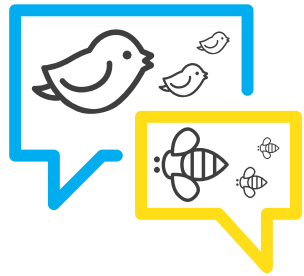
At PPSNE we affect tens of thousands of people's lives through health care and education. And we know our impact is most expansive, touching the lives of the nearly five million people living in Connecticut and Rhode Island, through movement building, culture change, and advancing justice. Your support makes all of our work - health care, education, and advocacy - possible.

MAKING IMPACT WITH THE NEXT GENERATION

Many young people have their first contact with Planned Parenthood through our Education and Training programs.



Beyond the Birds and the Bees provides inclusive, comprehensive sexuality education programming for high schoolers that is science-based, sex-positive, and affirming for all.



/SEX/ /POS·I·TIV·I·TY/

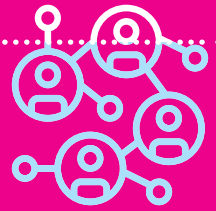
"Sex-positivity generally refers to having a positive attitude about sex, respecting others' sexual preferences and consensual sexual practices, and treating sex as a normal, healthy part of life, rather than a taboo topic or something to be ashamed of."

-Sexual Medicine Society of North America

"I enjoyed learning about my rights and being taught that everybody is not the same, everyone is different and it's okay so be comfortable with yourself."

” Beyond the Birds and the Bees participant

After completing the Beyond the Birds and the Bees program, we asked participants for their feedback. Here's some of what we heard:



93%

of survey respondents said they would recommend the program to a friend or family member.

86%

said they are likely or very likely to visit a Planned Parenthood health center if they were in need of services after attending the program.



"I liked how open and approachable everything was. Most of the information being discussed is thought of as taboo but facilitators gave us the information as something normal, they answered questions and didn't shy away from things."

” Beyond the Birds and the Bees participant

With the ongoing effects of the pandemic impacting the social and emotional well-being of teens, mental health education is more critical than ever. Our Education & Training team teamed up with The Mental Health Collaborative last year to develop an evidence-based teen mental health education curriculum that is set to launch in Spring 2023.



FINANCIALS FINANCIALS FINANCIALS

FINANCIALS FINANCIALS FINANCIALS

FINANCIALS FINANCIALS FINANCIALS



We want to thank the thousands of individuals and community partners who have made this essential work possible. Together with your time, energy and resources we will realize the vision of a more just society where sexual and reproductive rights are basic human rights, where health care is equitable and accessible to all, and where each person lives their healthiest life.

REVENUE	FY 2022	FY 2021
Private patient fees	3,455,385	3,527,732
Third party insurers	21,474,635	21,633,825
Contributions	9,380,888	7,431,078
Government grants	5,145,348	2,750,336
Other	5,295,641	1,455,665
Investment return for current operations	900,000	900,000

Total **45,651,897** **37,698,636**

EXPENSES	FY 2022	FY 2021
Medical services	30,052,938	28,512,842
Administration	6,156,284	5,637,360
Education	718,205	655,016
Public affairs	667,405	1,341,253
Fundraising	1,365,946	1,333,489

Total **38,960,778** **37,479,960**

Net surplus from operations ***6,691,119** **218,676**

**includes \$4.1 million of Covid relief funding*



ANNUAL REPORT FINANCIALS FISCAL YEAR ENDED JUNE 30, 2022

NET ASSETS	FY 2022	FY 2021
Loss on disposal of fixed assets	(181,462)	(132,870)
Capital Campaign	17,000,000	-
Return on investments and trusts	(5,462,997)	4,308,524
Change in net assets	18,046,660	4,394,330
Beginning net assets	57,330,020	52,935,690
Ending net assets	75,376,680	57,330,020
Long term assets	25,339,090	26,878,836
Current assets	52,297,097	38,505,740
Liabilities	(2,259,507)	(8,054,556)
Net Assets	75,376,680	57,330,020

Executive Team

Amanda Skinner, MSN, MBA
President & CEO

Willa Marth, MAT
Chief Equity & Learning Officer

Yazzy Moya, MBA
Chief Financial Officer

Erika Ulanecki
*Chief of Staff & Head of Strategic
Communications*

Zari Watkins, JD, MBA
Chief Operating Officer

Board of Directors

William Aseltyne

Alma Guerrero Bready, MD

Gayle Capozzalo

Jamie Daniel

Paméla Delerme

Sheila Dormody

Danielle Bahr Eason

Kate Busch Gervais

Sue Hessel

Babz Rawls Ivy

Dawn Johnson

Meghan Lowney

Julia McDowell

Michelle Palmer

Lisa Vura-Weis

Alison Williams

Officers

John Morton, MD
Chair

Katherine Kraschel
Vice Chair

Connie Malavé Branyan
Secretary

Sheila Mossman
Treasurer

With your support, we will continue to provide high-quality,
affordable, nonjudgmental health care, education, and
advocacy to advance equity and protect the fundamental right
to sexual health and reproductive freedom for all.

No matter what.



THANK
YOU THANK
YOU
THANK YOU

THANK YOU

THANK YOU THANK YOU
THANK YOU THANK YOU THANK



 **DONATE@PPSNE.ORG**

   **@PPSNE**

 345 Whitney Avenue | New Haven, CT 06511 | 203.865.5158

 175 Broad Street | Providence, RI 02903 | 401.421.7820

PPSNE.ORG/DONATE

PPSNE.ORG

